



## Beltinge, Herne Bay

Guide Price **£329,950** Freehold

...for Coastal, Country & City living.



• 95/97 Tankerton Road . Whitstable . Kent CT5 2AJ . t: 01227 266441 . f: 01227 266443  
e: sales@christopherhodgson.co.uk, lettings@christopherhodgson.co.uk . [www.christopherhodgson.co.uk](http://www.christopherhodgson.co.uk)

Estate agency services are provided by Christopher Hodgson Limited, a company incorporated and registered in England and Wales with the number 07108955 whose registered office address is at Camburgh House, 27 New Dover Road, Canterbury, Kent CT1 3DN. Lettings and valuations are provided by Christopher Hodgson and Helen Hodgson trading as Christopher Hodgson.

# Beltinge, Herne Bay

236 Reculver Road, Beltinge, Herne Bay, Kent, CT6 6QB

A spacious semi-detached house conveniently situated in the desirable village of Beltinge, located on the outskirts of the popular seaside town of Herne Bay and within close proximity of shops and amenities, bus routes, and Reculver C of E Junior School. A short stroll from the property will take you to the seafront and Saxon Shore Way coastal footpath, and Herne Bay mainline station is 2.2 miles distant.

The property would now benefit from a programme of updating and improvement and provides comfortably proportioned accommodation comprising an entrance hall, sitting room, kitchen, conservatory, three bedrooms, a bathroom and a cloakroom.

Outside, the rear garden extends to 60ft (18m) and enjoys a Westerly aspect. A driveway provides an area of off street parking and access to an integral garage. No onward chain.



## Location

Beltinge is a desirable location on the outskirts of Herne Bay, easily accessible to the town itself and moments from the beach. The area is well served by local amenities include a post office, Cooperative, pharmacy and dental practice. Herne Bay is a popular coastal town, boasting a highly regarded seafront, sailing club and watersport facilities as well as a variety of individual retail outlets, supermarkets and schools. There is also a mainline railway station providing fast and frequent links to London (Victoria) approximately 88 minutes. The high speed Javelin service provides access to London (St Pancras) with a journey time of approximately 78 minutes. The A299 is accessible providing a dual carriage way link to the M2/A2 with access to the channel ports and subsequent motorway network.

## Accommodation

The accommodation and approximate measurements are:

## GROUND FLOOR

- **Entrance Hall**  
6'3" x 3'3" (1.91m x 0.99m)  
at maximum points.
- **Sitting Room**  
15'8" x 13'4" (4.78m x 4.07m)  
at maximum points.
- **Kitchen**  
12'4" x 10'11" (3.78 x 3.34)  
at maximum points.
- **Conservatory**  
14'9" x 9'0" (4.50 x 2.75)  
at maximum points.



- **Cloakroom**  
6'5" x 2'11" (1.96m x 0.89m)  
at maximum points.

#### FIRST FLOOR

- **Bedroom 1**  
15'8" x 9'11" (4.78m x 3.04m)  
at maximum points.

- **Bedroom 2**  
11'6" x 8'4" (3.50m x 2.53m)  
at maximum points.

- **Bedroom 3**  
11'7" x 7'9" (3.52m x 2.35m)  
at maximum points.

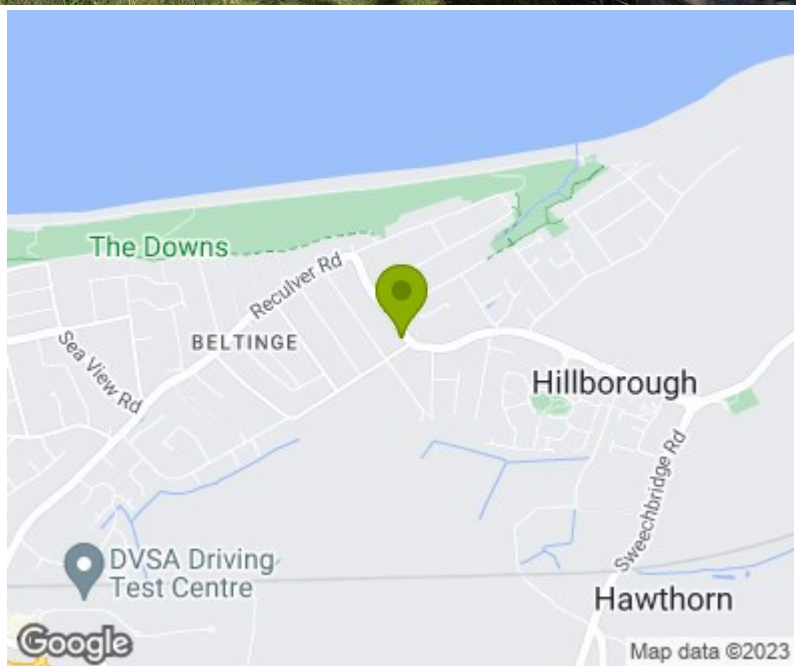
- **Bathroom**  
6'9" x 5'6" (2.06m x 1.68m)  
at maximum points.

#### OUTSIDE

- **Integral Garage**  
17'0" x 9'1" (5.20 x 2.77)  
at maximum points.

- **Garden**  
60' x 19' (18.29m x 5.79m)  
at maximum points.

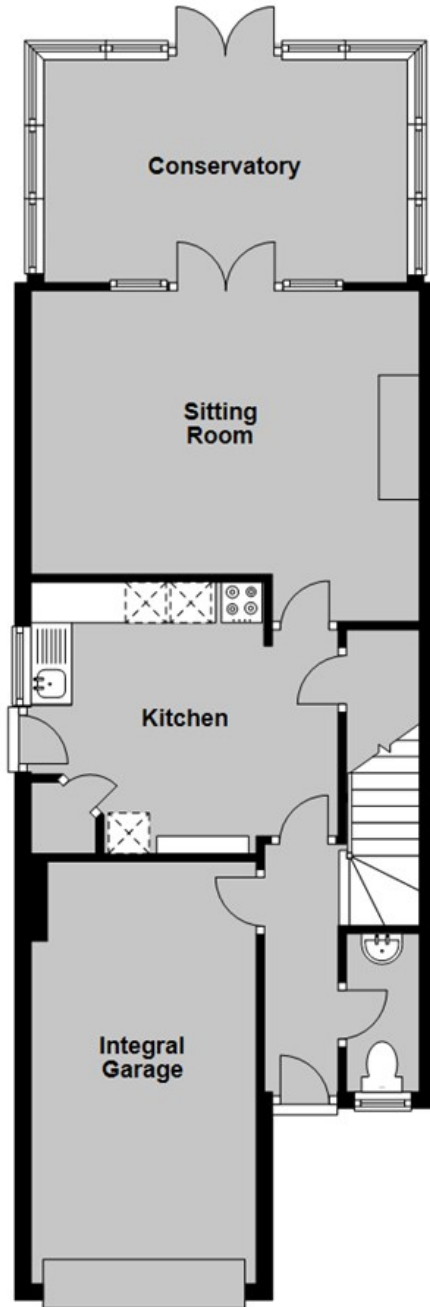
**Video Tour**  
Please view the video tour for this property, and contact us to discuss arranging a viewing.





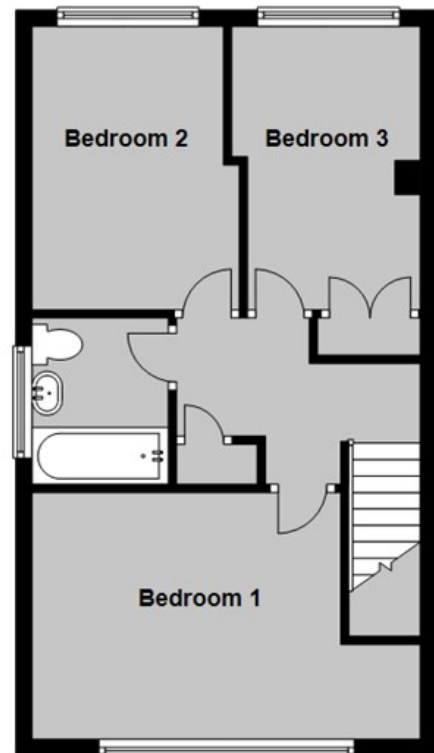
### Ground Floor

Approx. 66.5 sq. metres (716.2 sq. feet)



### First Floor

Approx. 42.2 sq. metres (453.8 sq. feet)



Total area: approx. 108.7 sq. metres (1170.0 sq. feet)

Council Tax Band C. The amount payable under tax band C for the year 2023/2024 is £1,864.53

Viewing: STRICTLY BY APPOINTMENT WITH AGENTS . t: 01227 266441

Christopher Hodgson Estate Agents for itself and as for the vendor or lessor (as appropriate) gives notice that: 1 These particulars are only a general outline for the guidance of intending purchasers or lessees and do not constitute in whole or in part an offer or a Contract. 2 Reasonable endeavours have been made to ensure that the information given in these particulars is materially correct but any intending purchaser or lessee should satisfy themselves by inspection, searches, enquiries and survey as to the correctness of each statement. 3 All statements in these particulars are made without responsibility on the part of Christopher Hodgson Estate Agents or the vendor or lessor. 4 No statement in these particulars is to be relied upon as a statement or representation of fact. 5 Neither Christopher Hodgson Estate Agents nor anyone in its employment or acting on its behalf has authority to make any representation or warranty in relation to this property. 6 Nothing in these particulars shall be deemed to be a statement that the property is in good repair or condition or otherwise nor that any services or facilities are in good working order. 7 Photographs may show only certain parts and aspects of the property at the time when the photographs were taken and you should rely upon actual inspection. 8 No assumption should be made in respect of parts of the property not shown in photographs. 9 Any areas, measurements or distances are only approximate. 10 Any reference to alterations or use is not intended to be a statement that any necessary planning, building regulation, listed building or any other consent has been obtained. 11 Amounts quoted are exclusive of VAT if applicable. 12 Whilst reasonable endeavours have been made to ensure the accuracy of any floor plan contained in these particulars, all measurements and areas are approximate and no responsibility is taken for any error, omission or mis-statement. This plan is for illustrative purposes only and should be used as such by any prospective purchaser. 13 Any mapping contained within these particulars is for illustrative purposes only and should be used as such by any prospective purchaser. No responsibility is taken for any error, omission or mis-statement. 14 Any computer generated images contained within these particulars are for illustrative purposes only and should be used as such by any prospective purchaser.

